



CARNLEA — WOOD —

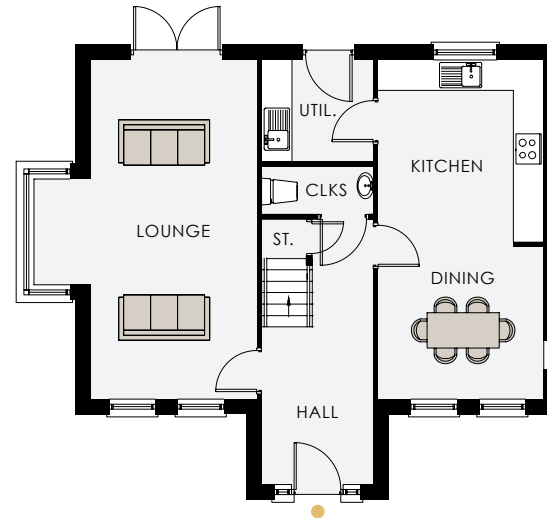
MONKSTOWN ROAD
NEWTOWN ABBEY
BT37

THE BROMLEY

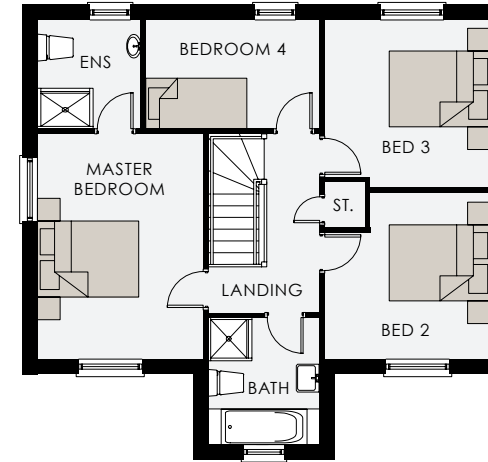
THE BROMLEY

Total Floor Area
1,393 sq ft approx.

Plans shown are Site 4.
Site 93 is a handed version.





GROUND FLOOR



FIRST FLOOR

TYPE Z


CARNLEA
 — WOOD —
MONKSTOWN ROAD
 NEWTOWNABBEY
 BT13 7

 Reeds Rains
Since 1868
GLENGORMLEY
 Telephone 028 9084 3427
 www.reedsrains.co.uk

GROUND FLOOR

Entrance Hall	
Cloakroom	7'2" x 3'1"
Lounge into Bay	21'10" x 14'4"
Kitchen / Dining	21'10" x 10'8"
Utility	7'2" x 6'6"
Store	

FIRST FLOOR

Master Bed	14'6" x 10'8"
Ensuite	7'0" x 6'7"
Bedroom 2 Max	10'9" x 10'4"
Bedroom 3 Max	10'9" x 10'4"
Bedroom 4	11'6" x 7'0"
Bathroom Max	7'6" x 7'6"
Store	

