



CARNLEA
— WOOD —

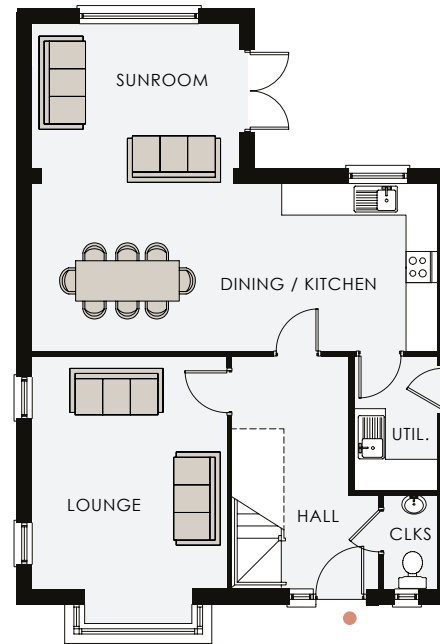
MONKSTOWN ROAD
NEWTOWNABBEY
BT37



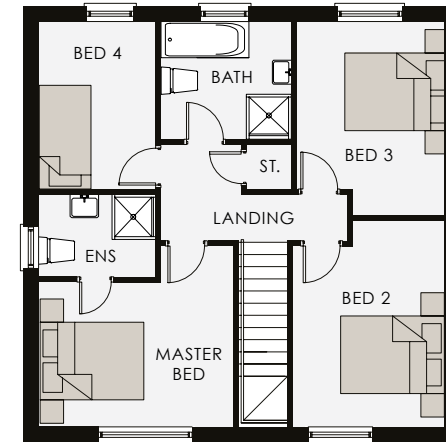
THE
BERWICK

THE BERWICK

Total Floor Area
1,460 sq ft approx.



GROUND FLOOR



FIRST FLOOR

TYPE ND3


CARNLEA
 — WOOD —
MONKSTOWN ROAD
 NEWTOWNABBEY
 BT137

Reeds Rains
• Since 1868 •
GLENGORMLEY
Telephone 028 9084 3427
www.reedsrains.co.uk

GROUND FLOOR

Entrance Hall	
Cloakroom	6'2" x 3'4"
Lounge into Bay	16'10" x 12'3"
Kitchen / Dining	25'6" x 10'6"
Utility	8'5" x 5'3"
Sunroom	13'1" x 9'11"

FIRST FLOOR

Master Bed	Max 12'3" x 11'6"
Ensuite	7'4" x 5'2"
Bedroom 2	Max 13'0" x 9'1"
Bedroom 3	Max 12'2" x 9'3"
Bedroom 4	Max 10'6" x 7'4"
Bathroom	8'2" x 7'2"
Store	

